



“
Creativity takes
courage.”
HENRI MATISSE



The **LA QUINTA ART CELEBRATION** is a treasured event in the Coachella Valley. The promoters, Paul Anderson and Kathleen Hughes (Kat) have a combined 50+ years of experience in art production. They have a proven track record of past success and a true commitment to the arts and artists.

In that spirit, they are launching a new platform, Celebrate Art Magazine. The magazine features 18 elite artists from the show and offers innovative art-centric design. The proceeds from the magazine sales support artists and various nonprofits. We believe that art is not a luxury, it is a necessity.

La Quinta Art Celebration hosts 200 premier artists for a 4 day art fair held the first weekend in March annually. Regarded the premier Fine Art Festival and Fine Art and Design Show in the country, La Quinta Art Celebration is the gold standard.

They are launching a dynamic digital magazine with virtual galleries for their artists, offering activities to explore color, engaging design and hosting artist cafes. Join us as we celebrate art, artists and creating inspired lives!

Paul Anderson Kathleen Hughes



“

X.”

PAUL ANDERSON

*Would this page be more powerful
in first person?

ART ACQUISITIONS + COMMISSIONS allow you to create inspired spaces. It is a personal experience. Essence Arts is a fine art studio run by Anna Boatright. Anna is collaborating with La Quinta Art Celebration to facilitate art acquisition and commissions. She has worked extensively with the 18 artists in the magazine and is familiar with their inventory and their commission process. You are able to work intimately with the artist, but Anna is a resource too.

Anna manages design projects from the initial vision to the delivery and installation. She enhances the existing architecture and design elements, respecting functional requirements, budget and scope. She monitors progress and facilitates artistic collaborations. Anna is excited to collaborate with La Quinta Art Celebration to advocate for artists, celebrate art, elevate mood and give back - donating 10% of gross sales to charity.

Anna collaborates with her clients to design spaces that create the mood and energy that they desire. Her design services are complementary with your engagement. Using the psychology and physiology of color and form, Anna aligns her client's vision with fine art to create exquisite spaces. Color is not a property of objects, contrary to their appearance, but rather how our eyes perceive light. What we actually see are wavelengths of light. Color is essentially energy.

“

Where the spirit does not work with the hand, there is no *art*.”
LEONARDO da VINCI

“

The greatest danger is not that our *aim* is too high and we miss it, but that it is too low and we reach it.”
MICHELANGELO





4

1



“

Art is harmony
parallel with *nature.*”

PAUL CEZANNE

Index

LA QUINTA ART CELEBRATION	2
ESSENCE ARTS	4
ERIN HANSON	6
CHRISTOPHER JEFFRIES	14
CRYSTAL LOCKWOOD	18
TERRY SAUVÉ	20
BEN JOYCE	24
MARK LEWANSKI	30
CHRIS DELLORCO	34
TOM BOATRIGHT	40
JASON NAPIER	44
GASTON CARRIO	48
HARRY ROA	56
TERESA SAIA	60
MARK DOOLITTLE	62
DARYL THETFORD	66
FRED STODDER	68
LIJAH HANLEY	70
MYRA BURG + LIZ CUMMINGS	74
PRICING	80

The **La Quinta Art Celebration's mission** is to connect patrons to art and artists. The magazine is **selling art**. To view the artists' full galleries, purchase art or to meet with the artists on an intimate platform scan or go to:



www.celebrateartmagazine.com
or contact Anna at 360.349.5157

Proceeds from the sales generated support the artists and nonprofits.



5

Erin Hanson

OPEN IMPRESSIONISM

AN ART
prodigy

ERIN HANSON is a life-long painter, beginning her study of oils as a young child. Her passion for natural beauty is seen in her work as she transforms vistas familiar and rare into stunning interpretations of bold color, playful rhythms and raw emotional impact. Her frequent forays into National Parks and other recesses of nature include backpacking expeditions, rock climbing, and photo safaris.

Hanson's unique painting style has become known as Open Impressionism, which is now taught in art schools around the world. With hundreds of collectors eagerly anticipating her work and millions of followers online, Hanson has become an iconic, driving force in the rebirth of contemporary impressionism, and she is quickly recognized as a prolific, modern master.

Through the years, Hanson has continued to use the outdoors to inspire a huge collection of work. Erin Hanson transforms these landscapes into abstract mosaics of color and texture, her impasto application of paint lending a sculptural effect to her art. Her oil paintings stand out in a crowd, bringing a fresh new look to Western landscapes.

“

The purpose of open impressionism is to capture the true nature of being outdoors. Each painting is more of an *emotional* work than a photographic representation.”

ERIN HANSON



6



7

MANIFEST YOUR VISION. We are not simply advocating for the arts, we are promoting creativity. You have the ability to design spaces that elevate your mood. Whether it is the optimism of yellow, the calm of blues or the passion of red, the energy of your environment effects you. Add form and composition and you are creating an artistic masterpiece. Design your space to inspire you.

Balance in art refers to the distribution of perceived visual effects in relation to each other. We will use aesthetic and energetic resonance to produce harmonious environments. Aesthetic is the physical appearance and energetic is the more subtle energy. We feel more at ease when the composition and colors are balanced.

Harmony is created by the combination of similar or related elements, such as analogous color schemes, shapes or textures. In art or design, harmony offers cohesion but it is important to have contrast too. A space that is too harmonious can be monotonous. We are creating spatial symmetry, based on your vision and the energy you wish to create. Your space should reflect your desire.

May we suggest you try rose colored glasses!

“

The aim of *art* is to represent not the outward appearance of things, but their inward signifciance.”

ARISTOTLE

PLAY ACTIVITY : PICK A MOOD you desire to have.

JOY? PEACE? PASSION? LOVE? GRATITUDE?

Envisioning it. See it in your mind.

What color do you see?

Play with the color.

Eat it. Wear it.

Listen to it.

Try Haiku.

Journal.



(Use your heart, not your mind.
FREEDOM IS A LOVE SONG.)

“

It's not what you look at that matters. It's what you *see*.”

HENRY DAVID THOREAU





8

HOW DO YOU USE THIS MAGAZINE? We are selling the art in the magazine. If you wish to purchase the art or see more art, we have created a digital magazine with virtual galleries for each of the 18 artists. You can purchase the art or meet the artists as well as explore their art, inspiration and technique at www.celebrateartmagazine.org

ANNA IS AVAILABLE TO CONSULT YOU. Whether you are purchasing an existing piece or a commission, she will be a valuable resource. With a background as a gallery owner, fine art consultant, designer and artist, Anna is familiar with the art acquisition process. She will assist you from the vision to the installation. It is fun!

ART IS MEANT TO BE EXPERIENCED. Anna has created a digital magazine with art studios that explore color, light, mood, form, and creativity. The 18 artists included in the magazine offer their inspiration and techniques with artist cafes. You can study the art of the masters and their historic relevance. The site offers fun and engaging practical activities.

WHAT ASSURANCES DO YOU HAVE? We have vetted our artists for talent, passion and professionalism. We assist you in the purchase and delivery. Upon purchase, you will receive a certificate of authenticity, statement of value, artist inspiration and the art. You will also receive a bouquet from the artist, a gesture of their gratitude.



“All religions, *arts* and sciences are branches of the same tree. These aspirations are directed toward ennobling man's life, lifting it from mere physical existence and leading the individual towards freedom.”

ALBERT EINSTEIN



Commission

ROCK SERIES

The client wanted to create a relaxed atmosphere, with reassurance and stability.

blues, greys, white

CHRISTOPHER JEFFRIES unique style and distinct designs reflect the hand of a dedicated and passionate master craftsman. Through extensive international education and experience with some of today's most inventive and renowned glass artists, Christopher has earned the attention of private collectors, galleries and businesses internationally.

After graduating from Chico State University with a degree in Fine Art, Christopher continued on to study sculpture and design at Lorenzo De Medici in Florence, Italy. Following his true passion of hand blown glass art, Christopher joined Haystack School of Crafts in Deer Isle, Maine where he studied under Sonja Blomdahl, a specialist of the incalmo technique. Christopher enrolled at the Penland School in North Carolina to train under Katherine Gray.

Christopher's passion for blowing glass led him to the Czech Republic - a country known for their rich traditions in hand blown glass art. Through an apprenticeship with master glassblower Igor Muller, Christopher gained even more knowledge of his techniques and designs that inspire him. He earned the recognition of Dale Chihuly, with an apprenticeship at the prestigious Boat House in Seattle.

“

I want people to be overwhelmed by *light* and color in a way they have never experienced.”

DALE CHIHULY

Christopher creates unique, fluid shapes and organic forms. The ROCK SERIES is inspired by the river beds along the Russian River, located in Northern California. The ISLAND SERIES is inspired by my travels to various islands scattered throughout the Pacific Ocean. I envision these installations as a series of snapshots from island chains. The INTERSECT SERIES is inspired by the wonders of human interaction. When lines and personalities come together, intersections form and relationships take place. The dynamic is powerful.



10



11



Turquoise

IS SYMBOLIC OF HARMONY + PROSPERITY.

IT IS THE FREQUENCY OF LUXURY + *ease*.

Turquoise has the effect of mental clarity and creativity. It is both stimulating and calming. It is a color of balance, evoking both the heart and mind. A space with turquoise (or variations such as aqua or teal) recharges you energetically, calming your nervous system and focusing your mind.

The physiology and psychology of color is a science. The energy and vibration of our environment has a quantifiable affect on us. Turquoise has both the calming effect of blues and stimulating hint of yellow.

color + mood



“
When color is right,
form is right. Color is
everything, color is
vibration like music;
everything is vibration.”

MARC CHAGALL

CRYSTAL LOCKWOOD received her B.A. in Art History from the University of California, Santa Barbara in 1992. Crystal currently exhibits her work mainly in Hawaii, California, and Washington State. Based in the San Francisco Bay Area, Crystal is a member of the prestigious San Francisco Art Group, The Red Umbrellas, whose mission is to promote art in public places.

Crystal began sculpting at the young age of 17, learning as an apprentice of Sigmund de Tonancour. Sculpting for the past 36 years, she has won numerous awards in exhibits on the West Coast and in Hawaii. Her work is in numerous private collections throughout the United States and Europe.

Crystal is well known for her ethereal, metamorphic sculptures of the human figure created from found driftwood. She personally selects each piece of wood for its natural energy and flow, incorporating the human form into the driftwood. Crystal has also expanded her practice to include stone and bronze sculpture.

ARTIST STATEMENT: I am mainly a figurative sculptor, my inspiration draws from the works of Rodin, Michelangelo, Classical Greek Art, Art Nouveau, and the more modern Manuel Neri. My method is subtractive, I carve away the parts that are not the figure, while saving other rough and raw parts that are essential to seeing the story of the driftwood's journey. There is a lot of letting go in my work. I want the piece to speak its truth. I try not to dictate too much of what I want, and instead listen to the driftwood and hear its story.

“

I saw the *angel* in the marble and carved until I set him free.”
MICHELANGELO



Crystal Lockwood

ETHERIAL FIGURES





Terry Sauvé

LUMINOUS LANDSCAPES

TERRY SAUVÉ had an awakening when her mother marveled at how she could do anything other than being an artist. She was dumbstruck - she hadn't really thought about doing what she loved more than anything as a career. She packed up and moved across the country to study art at the Academy of Fine Art University in San Francisco. Here she was blessed to learn both plein-air painting as well as traditional studio painting from the area's top painters. In 2000, she participated in her first art festival and the doors to the art world flew open. She was picked up by a prominent Sausalito gallery and has since exhibited in galleries and festivals across the country.

In a world in transition, Terry's luminous landscapes connect the viewer with something both ephemeral and transcendent. Feeling a deep connection with nature, she is inspired by the natural light falling over a scene. Capturing this magical quality of light as well as "pushing" the color are two primary focuses of her work. She is clear that her purpose is to bring more beauty and light into the world and aims to create an emotional impact, as well as a sense of balance and harmony in the viewer. She also loves working with clients to create stunning custom pieces to enhance their spaces and their lives.



CLAUDE MONET painted in the mid 1800s to early 1900s. He is considered the father of Impressionism. It was not simply his technique that defined him but his passion for nature and light. Monet had a fascination with how to visually represent light.

Launching a new style of painting, he suffered enormous criticism for deviating from Neo-classicism. His passion for this new obscured painting technique full of sunlight and shadows has now consumed the art world more than a century later. His work sells at Christie's and Sotheby's for large sums and impressionism is everywhere.

Monet was a master of color and light and was able to capture the wondrous beauty of simple scenes in nature. Light continues to fascinate artists. The ability to refract and capture light in various mediums is central to art. Terry Sauvé is a modern day master. She uses light to convey the brilliance of nature.

ARTIST STATEMENT: In high school French class, I chose Monet as my senior year thesis because of the quality of light he was able to capture. In art school I studied both plein-air painting, using spontaneous, impressionist techniques as well as classical studio painting, where one builds the sense of light in layers of paint and glazes. My work today pulls elements from both schools, filtered through my internal lens of what is beautiful."

It is ALWAYS the light which makes me catch my breath as I take in a new scene that I want to capture on canvas. My near obsession with it challenges me to create compositions which lead the eye in and through the painting, while maintaining the emphasis on light as the true focus of the piece.

“

These landscapes of water and reflection have become an *obsession* for me. It is beyond my strength as an old man, and yet I want to render what I feel."

CLAUDE MONET



Ben Joyce

ART OF PLACE



“
I created Abstract
Topophilia, love of
place, out of an
unconventional
approach to art.”

BEN JOYCE

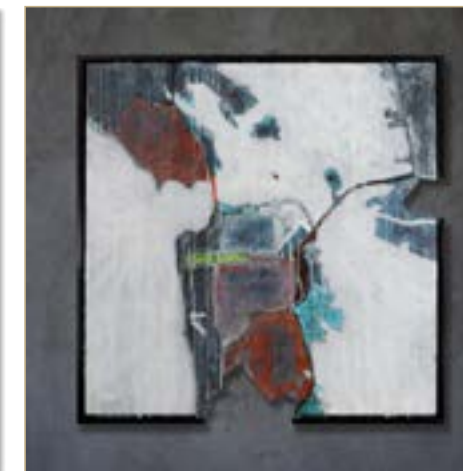
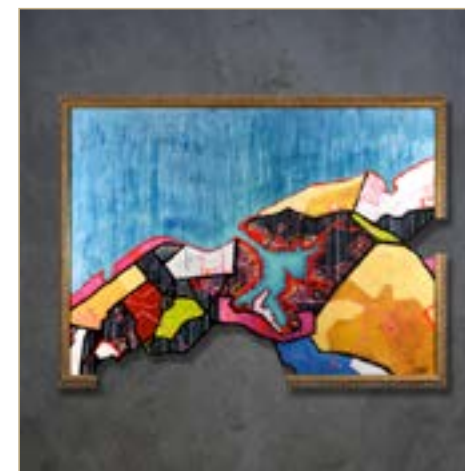


BEN JOYCE invites the viewer to transcend their experience of place through a radical new use of structure, form and elements. Ben has always felt compelled to share his artistic talents; from a young age, his study of form and space led to architectural works completed in the US by his early 20's. Then, while studying fresco, sculpture and color in Florence, Italy, he began his search for a new expressive connection to place. He was struck by the Europeans strong pride of P=place, and their love of the places they live. During this time, he mainly painted traditional landscapes, realistic in approach. The frustration came, when he'd paint over 40% of his work to create a perspective. For all his devotion to his Artwork, he desired to imbue an emotional recognizance particular to each individual.

Combining the 'Love of Place' and the structure of landscape one could travel through, Abstract Topophilia™ was born. Ben realized in painting from a birds-eye vantage point, it would force the viewer to connect to the piece on a personal level, and experience a personal odyssey through the piece.

Ben's work is constantly evolving, with his first Abstract Topophilia™ creation completed over 16 years ago. Since then, his work has found its home in a myriad of public and private collections both in the United States and abroad. Google Earth has invited Ben to create an annual 6 month exhibit in their corporate headquarters. They effervesce about Ben's ability to bring life and emotion to the static images they study everyday. Ben shows throughout the country from New York City to Chicago, Miami to San Francisco; and, he is always refreshingly amazed that the connection to place is universal. Ben just completed the art work for 18 transit stations in Las Vegas, depicting the stunning topography of Southern Nevada. His private commissions have been created for some of the biggest celebrities and most prominent corporations across the globe; a recent commission of three pieces were for a private 737 Boeing Business Jet, a complimentary setting for his work.

Ben currently lives in Spokane, WA.





investment + art

When there is so much we don't control, it is the perfect time to create our own personal spaces that replenish us, giving us vital energy and inspiration. We are creating environments that lift our spirits, that remind us of our many blessings. Not only will our emotional health be affected, but also our physical health. Art is an investment in yourself with many returns.

Art is not simply beautiful, it is powerful. There is a reason that Kings died surrounded by their art. Art is a talisman. It is a bridge between worlds, the seen and the unseen. Art does not simply bring you joy, it is an investment in life. Great art evokes in us as passion to live. It is beyond price. We do, however, provide you with an investment statement for your wealth management portfolio.

Capturing the art of place is a great place to start. Ben Joyce creates mixed-media paintings from an aerial view in a style he calls "Abstract Topophilia." Collectors around the world have commissioned paintings from Joyce, captivated by his unique perspective on place. For Ben it is about the pride of place. A pride that Ben feels passionately about.

“

Like the places I capture, the *pieces* are moving, pulsing ever changing. The shaped edges and cut outs break up the traditional hard lines that confine the experience, allowing the viewer to expand the painting beyond its borders with their knowledge of the area.”

BEN



Commission

4 SEASONS

To represent visually the
dynamic nature of place.
seasonal color + hue



VISIONARY
glass art

Mark Lewanski

GLASS WEAVING

MARK LEWANSKI is the engineer, artist and inventor behind these beautifully handcrafted pieces of woven glass. He started working with glass in 2000 and has ultimately become a creative vanguard in the field, having created hundreds of unique glass surfaces.

From homes to commercial spaces, modern to traditional and urban to southwest styles, Mark's work is perfect to fill that certain space that needs something "different and unique". Whether in bold, bright spectral pallets or in more subdued gray tones with just a hint of color, we are able to make the perfect piece come alive for generations of enjoyment. The colors in the glass are eternal, will never fade and are impervious to moisture.

Delivery and installation by Mark's team can be arranged for major commissions. Mark works from his downtown studio in the charming riverside town of Portland, MI, with his wife, Mary and two children, Augustus and Ignatius, with an additional studio in Lansing, MI and home gallery in Scottsdale, Arizona.

“

In no greater way can I express *joy* than by manipulating color.”

MARK LEWANSKI



You don't have to read much art history to realize that artists are often practiced musicians. The reason is that sound and color are both forms of light. Sound is light at a lower vibration and light is sound at a higher oscillation. All of creation, the physical and manifest as well as the energetic and unseen, is unified as light. Often famous artists have had synesthesia, the ability to hear color as sound and sound as color.

When you explore sound and color you realize that the rainbow has 7 Colors and there are 7 notes in music. Each complete scale of notes is called "saptaka" or a septave, meaning a scale of seven. Actual measurement shows that going from the low to the high, each eighth note has a vibration rate of double the number. It is the exquisite perfection of nature, brilliant simplicity. Listen to sound and imagine color. Close your eyes and use your imagination.

“

Color is the keyboard, the eyes are the harmonies, the *soul* is the piano with many strings. The artist is the hand that plays, touching one key or another, to cause vibrations in the soul.”

WASSILY KANDINSKY

“

Do you know that our soul is composed of *harmony*.”

LEONARDO DA VINCI





Chris Dellorco
EXQUISITE FIGURES

CHRIS DELLORCO was born in Los Angeles. Chris' initial interest in the interplay between art and architectural history began with a degree in Developmental Economics from U.C. Berkeley. Desiring a more creative field, he switched his focus from academics to art and went on to establish himself as one of the country's foremost illustrators. Although completely self-taught, his art career has spanned all aspects of illustration while specializing in the film industry, children's products and children's books.

In the entertainment field, he has illustrated numerous movie posters and won dozens of prestigious awards, including being a finalist for the prestigious Belding award. He has also shown his art work for many years in the Society of Illustrators Annual West Coast Exhibition. He currently shows his art at the David Kailey Gallery in Las Vegas, Cordair Art Gallery in Napa Valley and Art Connection in Pompano Beach, Florida.

For many years, he has exhibited his work at prestigious galleries and art festivals across the United States, and has been featured on the cover of Premier Magazine, Art Business News, Society, Art Tour International Magazine, Art Market Magazine and Décor Magazine. He has been named "50 Top Artists" by Art Business News and chosen as a "Contemporary Master" by ArtTour International Magazine multiple years.

During the 80's and 90's, Chris had been widely considered one of Disney's top illustrators for print advertising, specializing in Home Video packaging. His covers range from the award winning "The Lion King", "Snow White" to "Lilo and Stitch" and everything in between. If you own one of Disney's animated titles, Chris probably did the cover. A true renaissance man, along with a degree in Economics and a successful art career, he has also successfully written and directed an award winning short films.



“
The job of the artist is
to always deepen the
mystery.”
FRANCIS BACON



Human Nature

BELIEVE IN MORE



“

The main thing is to be moved, to love, to hope, to tremble, to *live*.”

AUGUSTE RODIN



Love + light

THE SCIENCE OF (HUMAN) NATURE

Humans are electromagnetic. Our energy consists of magnetic currents which resonate with our heart as well as electric currents which resonate with our mind. We experience the world emotionally and mentally.

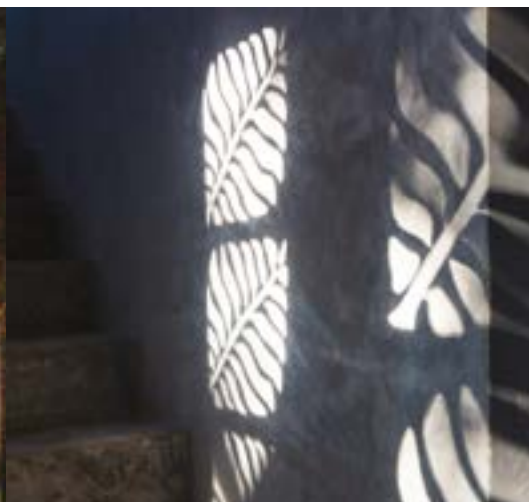
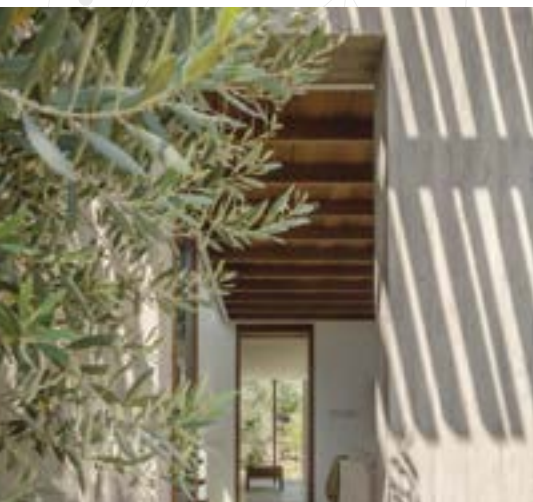
Why is it that 95% of our behavior is unconscious or emotional (without thought)? The heart's magnetic field is about 100 times stronger electrically and 5000 times stronger magnetically! We gravitate to love! Reflect on your life. How much of your energy has been consumed by emotion, looking forward and backward? Practice being present. What is your favorite time of day? What is the light like? Make a date to be on the patio at that time.

We have created a diverse portfolio of artists, but they are cohesive in their energy; they celebrate humanity and the natural world. We invite you to explore art, design and energy with the artists featured in the magazine at www.celebrateartmagazine.org. In addition to supporting the artists, we are donating 10% to the nonprofit of your choice when you purchase. When we do good, we feel good. It is our nature.

“

Look deep into *nature*, and then you will understand everything better.”

ALBERT EINSTEIN



celebrate nature

Tom Boatright

LUMINOUS BEAUTY



artisan PAINTS

Using his background in technology, Tom creates paints for each series. He adds metals and luminescence to raw oils and resins to create vivid color, organic textures and refract light.



TOM BOATRIGHT began painting through a series of visionary experiences in which he received a flood of energy - the essence of love. He paints to convey this energy, the beauty of humanity and nature. His paintings contain intention and raw emotion. Creating in a flow state of fluid consciousness, Tom's paintings are aesthetically beautiful but the true power is in the emotion imbued.

Tom creates his own artisan oil paints as containers for his vision. Mixing raw oils, resins, pigments, mica metallics and luminescent powders, Tom draws forth vibrant colors, surface textures, light refraction and organic patterns. The result is magical. He paints an abstract impressionism with an emergent and emotional technique. It is a collaboration and love affair between art and artist. Tom's paints are textural, luminescent, iridescent and crystalline, creating unique color palettes for each collection.

Tom's subject matter is consistent - the celebration of the natural world and humanity. He paints exquisite ecstasy of love in the subtle lines of the female form, tranquility in the sheen of water, awe in the organic movements of a petal. In pure abstraction, he paints both intentional lines and emotion. The beauty of his art is the dynamic of artist, art and audience - an alchemical flow of energy.

Tom's emergent method and diverse technique has received national recognition. His paintings are sought after by private collectors and grace thousands of homes as well as hundreds of corporate and commercial spaces. Each painting has a certificate of authentication and statement of the energy and intention as well as assessed value.



“Tom's *paintings* are beautiful but the power is in the energy - they emote.”
CHICAGO RITZ-CARLTON

inspiration + art

Jason Napier

MODERN ALCHEMIST

JASON NAPIER creates whimsical and expressive wildlife sculptures just make you smile. The animals he brings to life exude personality and always harness a colorfully rich patina. Twenty-five years ago, Jason discovered his talents while working in a bronze casting foundry as a means to pay for college. Napier became fascinated with the age old lost wax process and worked every job in the foundry. With so much inspiration surrounding him he soon began sculpting wildlife, a subject he loved since he was a child. Developing his unique style as a canvas for his trademark patinas was the A-HA!

Underneath the surface of Napier's modest, easy-going demeanor, there's a skilled sculptor and brilliant alchemist whose ability to create beautiful bronzes has captured the attention of collectors worldwide. His smooth surfaces, graceful lines and carefully selected high polished areas accentuate motion and give life to some of nature's most beloved subjects. With these inherent trademarks, Jason finds a harmony that is unparalleled the field of contemporary wildlife art.



“

Art is standing with one hand extended to the Universe and one hand extended to the world and letting ourselves be a conduit for passing *energy*.”

ALBERT EINSTEIN

The eagle is a symbol of freedom and strength. It is the emblem of the seal of the United States, with outspread wings. The eagle is regarded as the leader of winged creatures. It represents stamina, power, and resilience.

Symbols have cultural, familial and regional relevance. In interior design form is often symbolic. As you envision your space and what resonates with you, you will rely on emotion. This will occur instinctively. Art has the power to affect us emotionally. It uses color and form or symbolism. It will retrieve a distant memory or an association.

Commissioning art is a way to create art that is very personal. You can collaborate with the artist to envision a sculpture or painting that is symbolic of an aspect of your life. Whether it is the figure of an angel or the sunset on the mountains, you can design the perfect piece that is symbolic to you.

How do you know what to commission? You create like the masters, with your heart. Use your passion and inspiration. Begin by exploring. If you were a color what would you be? What color are you drawn to? If you had a symbol what would it be? Let's say you were getting a tattoo (just imagine). What would you get? People have an energy or vibration too. Who is someone you love to be with? What do you love about them? Schedule a date with them! Observe them. How do they look at the world? What gives them that vibe?

“

If I create from the *heart*
nearly everything works:
if from the head, almost
nothing.”

MARC CHAGALL



Gaston Carrio

ARTIST + ARCHITECTURE

GASTON CARRIO paints large pieces for their dramatic effect. Scale is everything. When you look at a painting of Monet, you are flooded with emotion. Not simply because of the magnificence of the painting, but the size. To have a profound effect on the space, you want to allow art to be impactful naturally. Art centric design, is literally that. Art is the focal point.

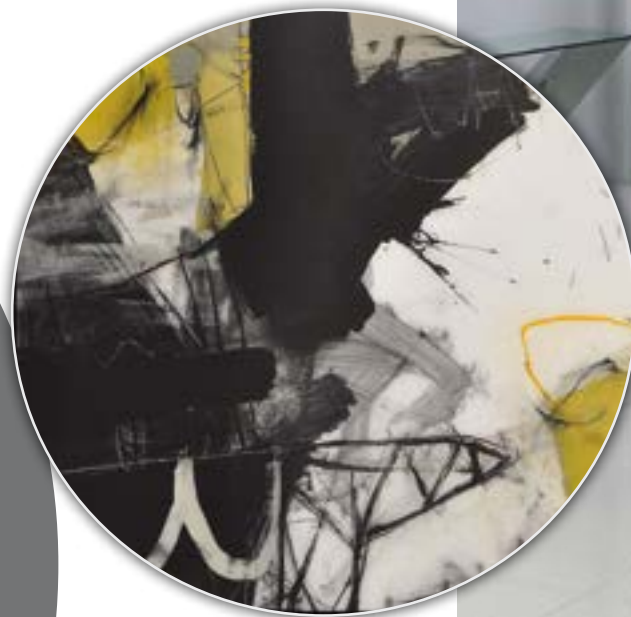
Since graduating with a Bachelor's degree in Architecture in 2001, I have spent much of my time designing different architectural projects all over the world. Drawing and sketching have always been a part of my life, especially during my years of training and working as an architect. At first painting represented primarily a means of self-discovery and expression for me, but over the years it has become an integral part of who I am.

Commission

STEEL BREEZE

To create a bold but welcoming entry piece.

yellow is emotional



energy + art

CREATING ENERGY

Prosperity (Wealth)
Influence (Fame)
Passion (Love)
Peace (Family)
Vitality (Health)
Inspiration (Creativity)
Ease (Wisdom)
Legacy (Career)
Faith (Angels)

In simple, and fun, ways you can create spaces that energize what you desire. If you want to focus on having more faith in your life (less fear) we would explore colors that enhance your ability to trust what is. You are being driven by energy, whether you are conscious of it or not. Why not choose!

“

Your frequency
determines the amount
of *light* you attract.”

ANNA BOATRIGHT





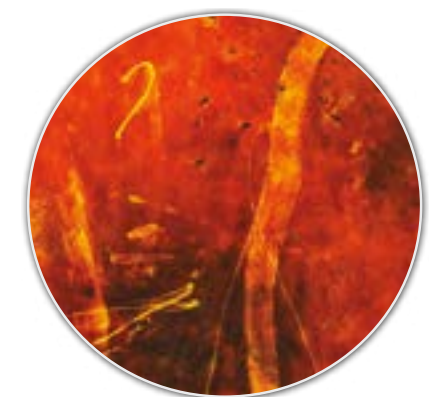
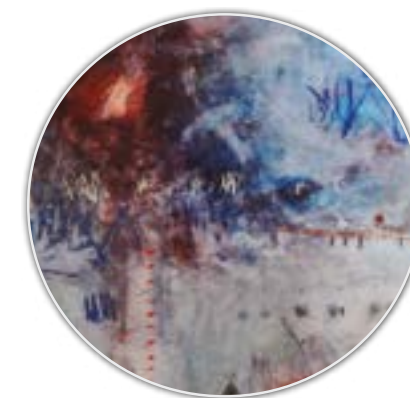
I am smitten, and at the same time intrigued, by the underlying, yet unspoken and sublime conversation, that a painting can evoke within one's unconsciousness. The range and possibility between the brush stroke; whether it be simple or complex, coupled with its overall effect, both inspires and challenges me to induce certain sense of the unknown, intimacy, as well as awe. I get immersed into interpreting the unconscious symbolism, especially those exceeding the limitations of simply aesthetic conditions.

Artists tap into the superconscious or Universal energy to create. It is this emotion that we experience. It is how art connects to us on such an unconscious and personal level.

“

What I am seeking is not the real and not the unreal but rather the *unconscious*, the mystery of the instinctive in the human race.”

AMADEO MODIGLIANI



AN
ACCLAIMED
ARCHITECT
+ artist





Why buy original art? The beauty and brilliance of original art is that it was created by the hand of a master. Within the painting or the sculpture is the energy of the artist. Their inspiration. Their passion. Their vision. Their torment. That creative force affects us. We are all artists creating our canvas. Our art is what we love. It is our passion. Art is life.

The power of art is displayed in the iconic tortured artist, Vincent van Gogh. He strove to convey his love of life in thick brush strokes. This radical idiosyncratic, emotionally evocative style has continued to affect art and culture. Although he sold just one painting in his lifetime, of hundreds created, he is regarded as a master artist. He was devout, painting daily. Despite his apparent failure as an artist of his time, he painted with raw brutal passion.

Vincent van Gogh was not formally trained, but he was driven by an inner force. He was obsessed with capturing the beauty of humanity and nature. This energy led him to fuse style and content resulting in dramatic imaginative and emotional canvases. His paintings convey far more than the subject matter. He explored paint as an alchemical medium. His canvases evoke his deep conviction.

“Love many things, for therein lies true strength.”
VINCENT VAN GOGH



Van Gogh
COURAGE of LOVE



Harry Roa
MASTER JEWELER

HARRY ROA STUDIO is an “Artisan Design & Fabrication Studio” based out of Sarasota, Florida and serves clients around the world. Harry’s designs are created with 14K & 18K gold Platinum with hand-picked precious stones. We have many designs to choose from but also do custom jewelry designs via sketches & Auto Cad renderings. Combining his love for architecture & jewelry, Harry’s designs have won many prestigious national awards.

At age 19 Harry found his calling and trained with Master Jewelers and designers while honing his craft. Harry specializes in the lost wax process and only fabricates with precious metals he designs and manufactures using novel high quality gemstones. With his uncanny sense of ergonomics and modern conceptual design ethic Harry’s jewelry wears like your favorite jeans with a lot of bling added.

As with all of our art, you are able to speak directly with the artist and discuss your vision in person. Harry and his beautiful wife, Lily, will guide you to the perfect piece, whether a direct purchase or a commissioned design, Harry’s work is not simply gorgeous, it is art!



“

Lily and Harry, when I opened the box and looked at the ring, it took my breath away! It is the *perfect* ring for my hand. I will treasure it forever! Thank you.”

SUSAN COLE, CLIENT





“

What is done
in *love*, is
done well.”

VAN GOGH

THERE IS AN ART TO LOVE. Using color to create mood is not isolated to spaces. You can use color to create an emotion. Red is symbolic of passion. It is the most emotionally intense color. The color red stimulates a faster heartbeat and breathing. It is the color of love and desire.

The platinum slider “Amor” with 6.8 carat cushion cut rubellite tourmaline is elegantly framed by brilliant cut diamond accents. The rubellite is a transparent gemstone from the colorful family of the tourmalines. Its name comes from the latin word “rubellus”, red. It is one of the most prized and expensive member of the tourmaline family because of its beauty and rarity.

The ring “Black Sand” perfectly blends nature with modern innovation, lightness and durability. Delicately crafted in 18K rose gold with a 13 mm Tahitian Pearl and brilliant cut diamonds, it symbolizes perfect symmetry. Tahitian pearls typically have a naturally dark color. These pearls have become some of the most sought-after, expensive pearls in the world.

Gold is timeless. It is rich and luxurious. The very nature of gold is symbolic of wealth and power. The color gold is the color of success and triumph. It is associated with prosperity, luxury and elegance. There are subtleties of gold. Rose gold has a tint of pink from copper which adds a feminine quality.

Black pearl is the color of all light absorbed. The psychological implications of that are considerable. It is an absence of light, since there are no wavelengths reflected. It communicates absolute clarity, with no subtle nuances. It is bold and decisive. It is sophisticated and elegant. It does not compromise, a color of substance.

Diamonds typically are predominantly white which is the color of total reflection of light. The diamond is symbolic of purity. It is regarded as a stone of promise and eternity. The diamond is a refraction of light and brilliant by design. Like black, white is considered uncompromising and pure in nature.

ARTISTIC *form* IS DESIGN





Teresa Saia

MASTER IMPRESSIONIST



TERESA SAIA has firmly established herself within the art community, demonstrating a sophistication of style, dynamic use of color, and sensitivity for light.

Teresa's work encompasses the medium of pastel, watercolor, printmaking and oil. Known for a consistent, direct style, she captures the attention of many collectors with her expressive use of radiant, rich color and dynamic light. The mood and emotion conveyed in her paintings evoke a deep sense of the mysterious, romantic, peaceful and yet familiar settings.

Her paintings explore the worlds she has discovered in her many travels abroad each year, as well as the beauty she finds in the Pacific Northwest. Her studio is located on Whidbey Island, an environment that provides vital energy for her creativity.

Teresa is a Master Pastelist of the International Association of Pastel Societies and a signature member of the American Impressionists Society. Recognized by numerous national awards and accolades from her peers, her paintings embody a passion she feels for all her subject matter. Believing it is necessary to continually develop, explore and grow, she lives a life devoted to her art.



emotion+art

TO LOVE IS TO CREATE. *vive l'amour*

Love is the inspiration of the masters. They lived with passion, inspired by an internal desire to convey the beauty that they perceived to the world. Whether it was Monet's pond or Van Gogh's sunflower, the emotion imbued was love. They endured self-doubt and cultural rejection in service to this intense devotion! As we reflect on their lives, we find inspiration.

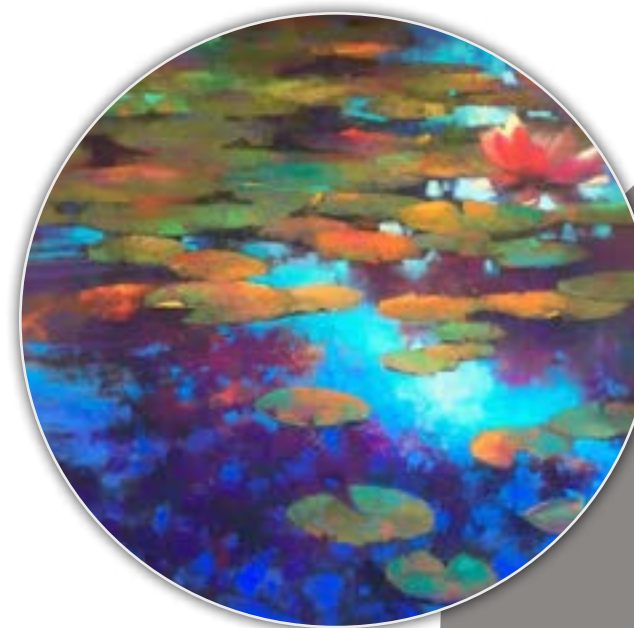
Join us as we explore art with the masters. These visionaries by definition broke the barriers of their time, seeing beyond their cultural confines. They evolved humanity, often suffering great personal anguish and torment. We owe these artists our gratitude for elevating our culture and inspiring generations. We seek to support modern masters and elevate our own lives in the process.

"Art must be an EXPRESSION OF LOVE or it is nothing." Marc Chagall

"A work of art which did not begin in EMOTION is not art." Paul Cezanne

"Everyone discusses my art and pretends to understand, as if it were necessary to understand, when it is simply NECESSARY TO LOVE." Claude Monet

What do you love? Are you in love? How would you describe love? How would you draw love? What color? What form? Which artists convey love? If love were a sound what would it be?



“Painting is *poetry* that is seen rather than felt, and poetry is painting that is felt rather than seen.”
LEONARDO DA VINCI



Mark Doolittle

INTRICATE CARVINGS

MARK DOOLITTLE holds a Doctorate in Biology and conducted a successful biomedical research career spanning 25 years. Specializing in the area of coronary artery disease, his work culminated in the discovery of a novel gene. In 2002, he began to experiment with carving gourds and wood, finding a style that reflected his background in biology. He became a full-time artist in 2012. His art work has been shown at prestigious art and sculpture shows, including SOFA Chicago.

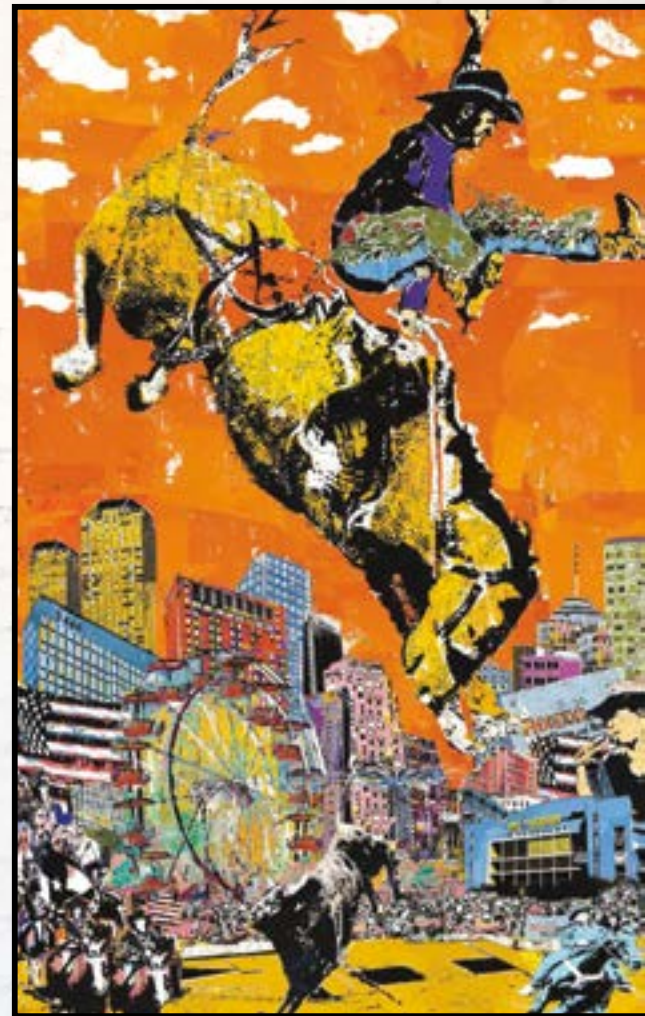
Nature is at the heart of his artistic style. He carves elaborate, often interlacing designs in wood to mimic natural forms, like that in coral or in the branching of trees. His art work employs a unique and distinctive vision of nature and biological form. Each piece is conceived and executed by the artist alone, using exotic hardwoods and burls from around the world.

These forms are often carved on wood vessels or vessel tops, as I enjoy the interplay of natural forms with the perfect symmetry of man-made ones. While wood is often my medium of choice, I also enjoy the use of mixed media involving gourds, stone, paper and natural elements such as fossils. Although his style involves intricate carvings and texturing involving many hours of bench work, he never employs laser or CNC machinery. Instead, each piece is handcrafted by wood turning and carving using rotary burrs and bits as well as hand tools, such as rasps and chisels.



“
The richness I achieve
comes from *nature*, the
source of my inspiration.”

CLAUDE MONET



Daryl Thetford

MODERN ART SCENES

DARYL THETFORD is an artist that is larger than life. His work has been described as graphic, modern, pop, and contemporary, although what to actually call the process has been a larger source of debate; it has been called photo collage, digital art, and digital mixed media. The process begins with Thetford selecting a single, original photographic image followed by a digital layering and combining of dozens of additional original photographs. It is a process which takes an average of 40 hours.

His resulting images range from culturally familiar individual pieces (bikes, cowboys, guitars, cityscapes) to more esoteric series' based on man's inner struggle with modern society or the human sense of isolation in the noise of the modern world. Thetford then creates a mixed-media piece using this printed image to create one of a kind paintings using torn and weathered handmade paper, various artist mediums and acrylic paint.

Daryl currently lives with his wife, writer and artist Dana Shavin in Chattanooga, Tennessee. They enjoy travel, great food, great art, and the company of good friends.

Daryl Thetford's work has been featured in solo and group exhibitions in museums and galleries throughout the United States, including the Ormond Museum of Art in Ormond Beach, Florida; the Art Museum of the University of Memphis; and the Knoxville Museum of Art; the Alexandria Museum of Art in Louisiana; the Annenberg Space for Photography in Los Angeles; the Hunter Museum of Art in Chattanooga; the Mobile Museum of Art in Alabama; the Coffman Gallery at the University of Minnesota; and the Museum of Anthropology of the University of California-Chico. Daryl has been commissioned by numerous public agencies and corporations around the country.



“
Art is something that makes
you *breathe* with a
different kind of happiness.”

ANNI ALBERS

Let's face it, it's been one of those years!

But, art can help! There is an increasing amount of scientific evidence that proves art increases our mood, enhances brain function and improves our emotional stability. Art has an impact on brain wave patterns, the nervous system, emotion and can actually increase serotonin levels. Art can change a person's outlook and even their personality. Art is powerful!

Decades of research prove that art impacts everything from overall intelligence to social and emotional development. The arts develop neural systems that produce a wide range of benefits improving everything from fine motor skills to creativity, mental health and well being. The arts are invaluable to us individually and as a society. Art matters. It affects us in a deep and profound way.

LET'S *celebrate* ART!



“

In spite of everything I shall
rise again: I will take up my
pencil, which I have forsaken in
my great discouragement, and
I will go on with my drawing.”

VINCENT VAN GOGH

2020 + art



Fred Stodder

CERAMIC ART

FRED STODDER grew up in Laguna Beach California and began seriously studying ceramics at age 16. The community, friends, family and mentors were all very supportive, so by the time he was 18 he was already exhibiting his ceramic work. He went on to receive a Bachelor of Fine Arts degree from the University of California, Irvine.

His ceramic art has been exhibited in numerous galleries, art festivals, and museums throughout the country. He is the recipient of numerous awards, appears in many important collections and has been featured in *Ceramics Monthly* as well as other national arts publications.





LIJAH HANLEY is a full time landscape photographer from Vancouver, Washington. In 2009, when he was 13, his work was recognized by National Geographic, and he had the incredible opportunity to study with world renowned photographers Bruce Dale and Amy Toensing in the Amazon Jungle. While in Peru, he had the opportunity to explore all types of photography, and learn from some of the most talented photojournalists in the world. Then in 2013, Lijah had the opportunity to study with National Geographic photographer Stephen Alvarez in London.

Since his time with National Geographic, Lijah has honed his photography, and focuses on capturing landscape images primarily of the United States. In 2015, Lijah and his wife, Gabby, converted a Dodge Sprinter into an RV, and set off to photograph the United States. Three years, 100,000 miles, and 48 states later, they are still chasing the light! His work is inspired by passages such as Psalms 19 which says, "The heavens declare the glory of God; the skies proclaim the work of his hands." His dream is to have a life-long career as a professional photographer and a never ending adventure.

Myra + Liz

DIMENSIONAL COLOR



MYRA BURG and **LIZ CUMMINGS** have found symbiosis that lights their art world on fire. Myra's rich, textural fiber wrapped cylinders, fondly known as "Quiet Oboes" offer three dimensions in a world of color. Hand wrapped fibers with exotic textures and a myriad of hues become wall jewelry. Liz Cummings works in acrylic, often with iridescent glaze on unusual long, geometric, dimensional canvases. Together, these complementary elements comprise breathtaking art for your spaces.

With their mutual background in architecture and their ability to create color combinations of every variety and pieces to fit any budget and wall space, including curved walls, you just might want to call them. They're friendly. They create a fun and celebratory mood.



“

There is no must in art because art is *free*.”
WASSILY KANDINSKY

Your Dream MADE MANIFEST

We will manifest YOUR VISION. It is a collaborative process in terms of the function, design and inspiration. Whether you are purchasing a painting or decorating a new home, we will work with you to establish the fundamentals of the project: the scope, budget and duration. We integrate appropriate elements of architecture, design, lighting and energy.

We have extensive experience in design aesthetics and energetic resonance but the art has to resonate with you. It is personal. That is where we start - your vision. What mood or energy do you wish to create? This can include vision boards, vibe boards, color and texture trays. We even use flower bouquets to get the vibe of colors. Each artist has their own unique method.

We are creative in our approach but we are practical too. We appreciate the process and the product. The installation may be as simple as assessing the scale of the wall or it could be a dive into your image, brand or dreams. No matter what your project, it should be fun! You are telling your story! It is an investment in your life and those that you love.



“Imagination is more important than knowledge.”
ALBERT EINSTEIN



“
The earth laughs in
flowers.”
RW EMERSON

your blessings

“
Go confidently in the direction
of your dreams! Live the life
you’ve imagined.”

HENRY DAVID THOREAU



There are things that money can't buy, and things that it can. It turns out the line may blur. When we started to study happiness instead of depression what we found is there are blue zones. Blue zones are demographics and or geographic regions where there are a high number of Centurions. The residents of these zones live longer, suffer a fraction of the diseases and enjoy greater health and happiness. Much of what they attribute to their longevity and elevated mood are non-tangibles; it is not simply diet and exercise. What mattered was a sense of purpose, community and awe.

Life in blue zones have some commonalities. People in blue zones are moderate in their behavior. They have moderate physical activity, caloric intake and even wine (yes, wine). They have an element of freedom or faith. They are passionate about life and living. They enjoy the finer things; they celebrate. They value family, friends and their community. They are altruistic. They believe in more, and that they have more to give. They live a life of purpose and influence.

What can we take from this? Count your blessings! Take the time to enjoy the finer things in life. Maybe they aren't the luxuries. Maybe they are the necessities. Maybe that is what matters the most in the end. Take the time to live intentionally and create the life you desire.

“

That *awe*, wonder and beauty promote healthier levels of cytokines suggests the things we do to experience these emotions – a walk in nature, losing oneself in music, beholding art – has a direct influence upon health and life expectancy.”

DR DACHER KELTNER, California University in Berkley



Prices

1 x		2
2 x		4
3 x		6
4 x		8